



PUSHING  
THE FRONTIERS  
OF INNOVATIVE  
RESEARCH

University of Amsterdam

Universitat de Barcelona - University of Cambridge

University of Copenhagen - Trinity College Dublin - University of Edinburgh

University of Freiburg - Université de Genève - Universität Heidelberg

University of Helsinki - Universiteit Leiden

KU Leuven - Imperial College London - University College London

Lund University - University of Milan - Ludwig-Maximilians-Universität München

University of Oxford - Sorbonne University

Université Paris-Sud - University of Strasbourg - Utrecht University

University of Zurich



# *League of European Research Universities*

## *About us About H2020 and FP9*

**Dr. Katrien Maes, Deputy Secretary-General LERU**

**Brussels, 22 January 2018**

**Visit of the Danish Parliament's Education and Research Committee**



# LERU is...



- ✓ An association of **European research-intensive universities**
- ✓ Non-profit organisation
- ✓ Founded in **2002**
- ✓ **23** members in 12 countries
- ✓ Membership by invitation

## Committed to:

- **Encourage education** through an awareness of the frontiers of human understanding;
- **Foster the creation of new knowledge through basic research** as the ultimate source of innovation in society;
- **Promote research across a broad front**, which creates a unique capacity to respond to new opportunities and problems.

# Members

## LERU members:

University of Amsterdam  
 Universitat de Barcelona  
 University of Cambridge  
 University of Copenhagen  
 Trinity College Dublin  
 University of Edinburgh  
 University of Freiburg  
 Université de Genève  
 Universität Heidelberg  
 University of Helsinki  
 Universiteit Leiden  
 KU Leuven  
 Imperial College London  
 University College London  
 Lund University  
 University of Milan  
 Ludwig-Maximilians-Universität München  
 University of Oxford  
 Sorbonne University  
 Université Paris-Sud  
 University of Strasbourg  
 Utrecht University  
 University of Zurich



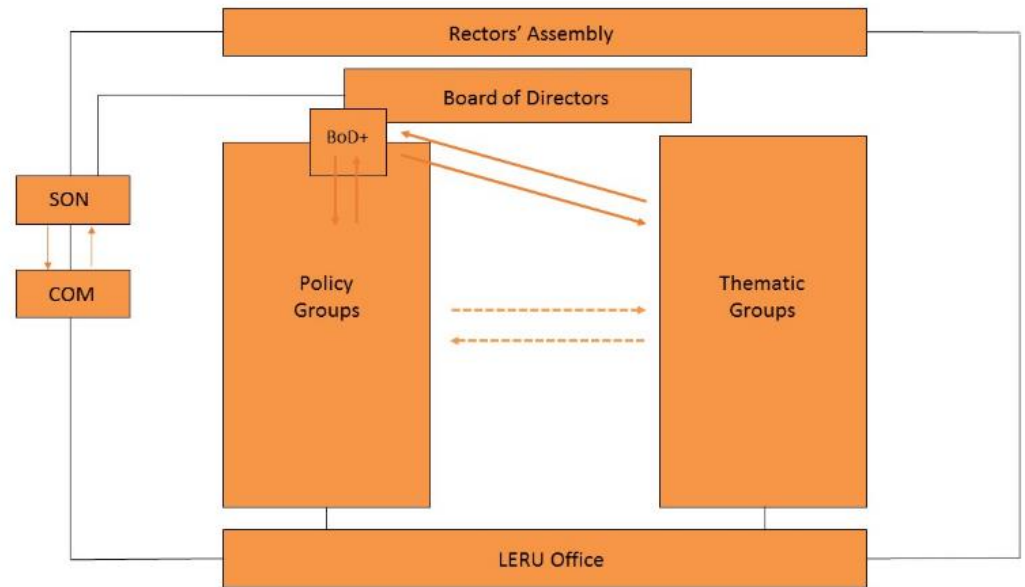
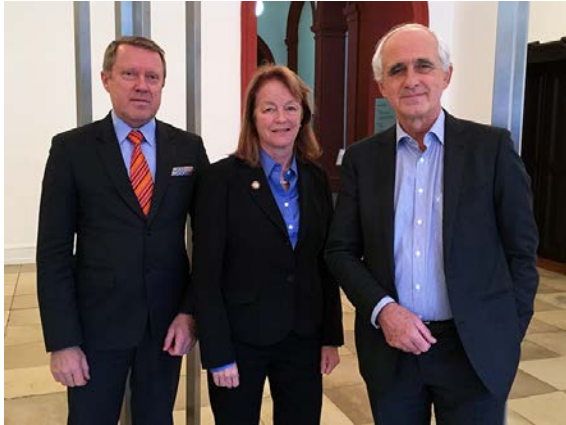


# Members by country

<b>Belgium</b>	KU Leuven	<b>Netherlands</b>	University of Amsterdam Leiden University Utrecht University
<b>Denmark</b>	University of Copenhagen	<b>Spain</b>	Universitat de Barcelona
<b>Finland</b>	University of Helsinki	<b>Sweden</b>	Lund University
<b>France</b>	Sorbonne University Université Paris-Sud University of Strasbourg	<b>Switzerland</b>	Université de Genève University of Zurich
<b>Germany</b>	University of Freiburg Universität Heidelberg LMU München	<b>United Kingdom</b>	University of Cambridge University of Edinburgh Imperial College London University College London University of Oxford
<b>Ireland</b>	Trinity College Dublin		
<b>Italy</b>	University of Milan		



# Organisation



In 2016 LERU Universities contributed

**€100 billion GVA**

to the European economy and supported

**1.3 million jobs**

A stylized map of Europe in white, set against a dark blue background. The map shows the outline of the continent, including major landmasses and surrounding waters.The LERU logo, consisting of the letters 'L', 'E', 'R', and 'U' in a stylized font. 'L' and 'R' are grey, 'E' is orange, and 'U' is grey. They are arranged in two rows: 'L E' on top and 'R U' on the bottom.

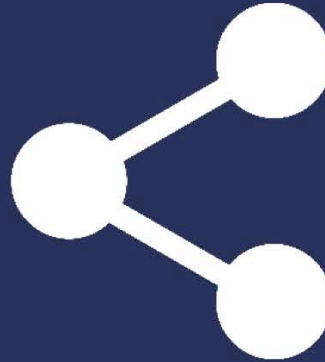
## LERU employees generate wider employment

Every job directly created by the LERU Universities supported almost **6 jobs** across Europe





## The LERU Universities distribute their research through interactions with industry



LERU Universities generated **€33.0bn GVA** in Europe by transferring their research into industry through **licenses, spin outs** and **services to business**

## The students of LERU Universities play a significant role in their economies



In 2016, there were **789,000 full time students**, who generated **€14.1 bn GVA** in Europe through their spending, employment and placements

# Policy Impact

- General Data Protection Regulation
- Open Access to publications
- Horizon 2020
- FP9
- EU Budget / MFF / EFSI
- EU Copyright reform
- Animal Research
- Gender equality

And many other dossiers ...



ERASMUS+





# LERU papers

- Implicit bias in academia: A challenge to the meritocratic principle and to women's careers - And what to do about it
- LERU comments on the Competitiveness Council conclusions “From the Interim Evaluation of Horizon 2020 towards the ninth Framework Programme”
- The economic contribution of the LERU universities in 2016
- Four golden principles for enhancing the quality, access and impact of research infrastructures
- LERU’s comments on the Lamy report on maximising the impact of EU R&I programmes
- Beyond the Horizon: LERU’s views on the 9<sup>th</sup> Framework Programme for Research and Innovation
- Productive interactions: Societal impact of academic research in the knowledge society
- Interdisciplinarity and the 21<sup>st</sup> century research-intensive university
- Excellent education in research-rich universities



# Engagement

- LERU Network Events
- LERU Doctoral Summer School
- LERU Law Portal & PhD Exchange Scheme
- Central-European Universities (CE7)
- Global Network of RIUs
- United Nations
  - Consultative status with the UN Economic and Social Council
  - Member of the UN Academic Impact
- ERA Platform with SH organisations





# Horizon 2020

- Added value – EU needs R&I
- Puts EU on the map globally
- Competition for excellence (nurture talent!)
- Structuring effects & new policies
- Investigator-driven & collaboration (“Triple I”)
- Discovery research and societal challenges

- Very low success rates
- Focused on close-to-market research (high TRLs)
- Complex rules and red tape



ADVICE PAPER  
No.21 - OCTOBER 2016

## LERU'S INTERIM EVALUATION OF HORIZON 2020

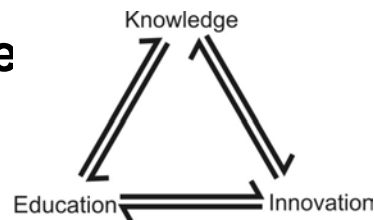
LEAGUE OF EUROPEAN RESEARCH UNIVERSITIES

University of Amsterdam - Universitat de Barcelona - University of Cambridge - University of Edinburgh  
University of Freiburg - Université de Genève - Universität Heidelberg - University of Helsinki  
Universiteit Leiden - KU Leuven - Imperial College London - University College London - Lund University  
University of Milan - Ludwig-Maximilians-Universität München - University of Oxford  
Pierre & Marie Curie University - Université Paris-Sud - University of Strasbourg  
Utrecht University - University of Zurich



# EU needs research, research needs EU

- FP has clear **EU added value**, EU needs research and innovation
- Increase investment in R&I to at least **3% of GDP** - both EU and Member states
- FP9: at least **€ 120 billion** (cf. EP (“double”) and Lamy report )
- FP focus on parts with strongest EU added value: **ERC, MSCA and collaborative R&I**
- Close the **knowledge triangle**



Beyond the Horizon:  
LERU's views on the 9<sup>th</sup> Framework  
Programme for Research  
and Innovation

LEAGUE OF EUROPEAN RESEARCH UNIVERSITIES

• University of Amsterdam • Universitat de Barcelona • University of Cambridge • University of Copenhagen • Trinity College Dublin  
• University of Edinburgh • University of Fribourg • Universitat de Girona • Universität Heidelberg • University of Helsinki  
• Universitat Ljubljana • KU Leuven • Imperial College London • University College London • Lund University • University of Milan  
• Ludwig-Maximilians-Universität München • University of Oxford • Pierre & Marie Curie University • Université Paris-Sud  
• University of Strasbourg • Utrecht University • University of Zurich



# FP9: Beyond the horizon

- **Excellence**: e.g. ERC (autonomy!) and MSCA (IFs, ITNs)
- **Collaborative** programme:
  - **Broad topics with bottom-up consultation** within set challenges (SDGs)
  - Top-down calls for emerging issues or to complement bottom-up topics
- **Impact**: more sophisticated approach, pathways to impact
- **Trust** in beneficiaries (accounting procedures)
- **Simplification**: continue!
- **Grants-focused** (not loans)
- **Input-based** (not output-based/close-to-market)



# Other important features of collaborative R&I

- **Clustering** of related (collaborative) projects >> create knowledge exchange and impact, and >> avoid overlap
- **Follow-up funding**: to test market potential, cross the “valley of death”, cf. PoC in ERC
- **SSH engagement**: e.g. in expert groups for bottom-up topics
- **International**: associated and third countries, reciprocal agreements (NIH)
- **Evaluation**: standing evaluation panels & remote reviewers, face-to-face meetings, transparent feedback to applicants,





# Other issues for FP9

- **Innovation**: stimulate, be systematic, set framework conditions - EIC - EIT
- **Open science**: 8 dimensions – publications, data, infrastructure, skills, careers, ...
- **RRI**: responsible R&I - integrity, ethics, equality, inclusion, ...
- **Synergies** with other programmes and priorities:
  - Widening: ESIF fixed % for synergies with FP9

## Competitiveness Council Conclusions 1/12/2017

A photograph of an elephant standing in a field with trees in the background. The text is overlaid on the right side of the image.

# The elephants in the FP9 room: Budget & Brexit

04.12.2017

### BUDGET

- Did NOT call for an increase in FP budget
- Remember the Tallin Call for action? (Estonian Presidency)  
“Seize the opportunity now!”
- EP supports - ECOFIN opposes
- 2018 budget for research: positive!

### BREXIT

- UK universities should be able to participate in FP9



# Summing up

- Invest in research and innovation
- Create an ambitious, innovative programme
- FP 120 bn euro
- Increase funding for ERC and MSCA
- Increase FP's efficiency and impact
- Timing not to be compromised! (MFF)

**LERU ready to engage all the way!**



# Contact

Katrien Maes:

[katrien.maes@leru.org](mailto:katrien.maes@leru.org)



@katrien\_maes



[Info@leru.org](mailto:Info@leru.org)  
[www.leru.org](http://www.leru.org)



League of European Research Universities (LERU)  
Minderbroedersstraat 8  
3000 Leuven - BELGIUM